



# ASSET LIFECYCLE MANAGEMENT

Transform Assets into Trusted Business Value.

## Product description

Asset Lifecycle Management (ALM) is a comprehensive, enterprise-grade platform designed to govern, control, and optimize the complete lifecycle of physical, passive, and IT assets across large and complex organizations. ALM enables telecommunications operators, oil and gas enterprises, banks, and large regulated institutions to transform fragmented asset data into trusted financial and operational intelligence, ensuring transparency, audit readiness, and sustainable value realization at scale.

## Business challenge

Large enterprises operate in asset-intensive environments where fragmented systems, manual processes, and inconsistent data create financial risk. Inaccurate asset registers, aging capital work in progress, limited utilization visibility, and weak lifecycle governance lead to over-procurement, audit findings, delayed capitalization, and reduced executive confidence in financial reporting. These challenges are amplified across telecom, oil and gas, and banking sectors where scale, regulation, and complexity demand a governed and automated approach to asset management.

## ALM solution

The ALM platform delivers a single, reconciled system of record that unifies technical, financial, passive, and IT assets under a governed lifecycle framework. It automates asset onboarding, validation, movement, capitalization, depreciation, and retirement while continuously reconciling physical assets with financial books. ALM integrates seamlessly with ERP, Repository Source Connectors, ITSM, Field Force Management and discovery platforms to ensure accuracy, control, and scalability without vendor lock-in.

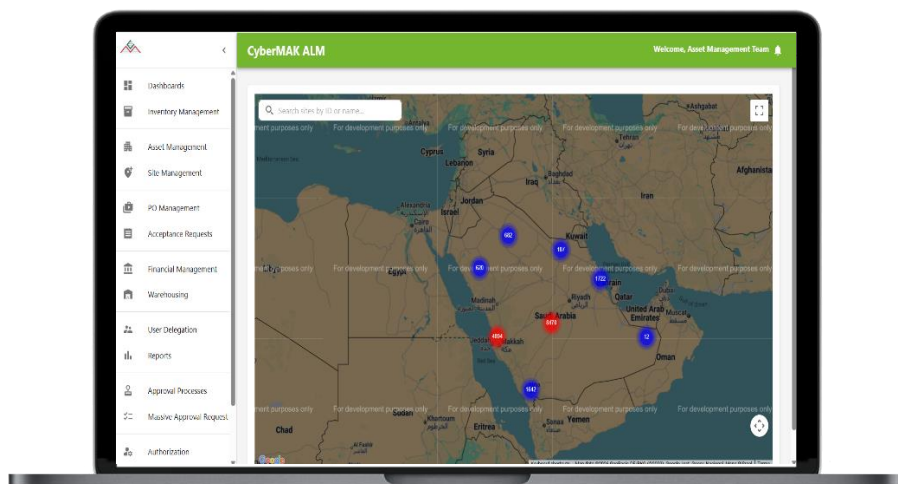
## KEY FEATURES

Automate, innovate, and optimize experiences across the business with:

- **End-to-end asset lifecycle governance**—from investment planning to compliant retirement.
- **Unified inventory** for telecom, passive, and IT assets with Level-4 standardized classification.
- **Passive asset discovery** through a mobile application enabling field-based validation, tagging, and verification of non-network assets.
- **Automated IT asset and license discovery** through integration with the Snow platform for continuous visibility and compliance.
- **Quality control and validation layer** ensuring only verified assets are capitalized and financially recognized with support of work flows.
- **Integration-first architecture** designed to coexist with ERP, OSS, ITSM, and network discovery systems.
- **Executive dashboards** providing real-time, 360-degree visibility across financial and operational dimensions.

## KEY BENEFITS

- Improved capital productivity through accurate asset utilization and demand-driven investment decisions.
- Accelerated capitalization and reduced capital aging through automated acceptance and validation workflows.
- Enhanced audit readiness and balance-sheet integrity through continuous reconciliation and governance.
- Reduced operational risk and manual effort through standardized, automated lifecycle controls.
- Reliable executive decision-making enabled by trusted, real-time asset and financial insights.



## Product details

ALM supports asset-intensive organizations across telecommunications, oil and gas, banking, and large enterprises by providing configurable, industry-aligned lifecycle processes. The platform governs planning, acquisition, deployment, optimization, and retirement of assets while ensuring financial alignment and regulatory compliance. Mobile workforce enablement supports large-scale field operations, while Snow integration ensures accurate IT asset and license intelligence.

**Asset Inventory** – Maintains a single, reconciled inventory for telecom, passive, and IT assets with standardized classification and lifecycle status. Eliminates data fragmentation, improves transparency, and provides a trusted foundation for financial and operational decisions.

**Asset Acceptance** – Automates receiving, validation, and quality control to ensure only verified assets are operationally activated and financially capitalized. Accelerates capitalization, reduces acceptance aging, and improves audit readiness.

**Financial Control** Continuously reconciles physical assets with the Fixed Asset Register, governing capitalization, depreciation, transfers, and retirement. Ensures balance-sheet integrity, financial accuracy, and compliance with audit and accounting policies.

**Telecom Discovery (OSS / NMS)** – Integrates with OSS and NMS platforms to automatically discover and validate active network assets. Ensures accurate representation of the live network footprint, improves alignment between technical and financial records, and reduces network inventory discrepancies.

**IT Discovery (BMC)** – Leverages BMC Discovery to automatically identify IT infrastructure assets and dependencies. Enhances accuracy of IT asset records, supports service and financial alignment, and strengthens governance across hybrid and complex environments.

**IT License Discovery (Snow)** – Integrates with the Snow platform to provide continuous visibility into software assets and licenses. Reduces compliance risk, optimizes license spend, and ensures IT assets are fully governed within the enterprise asset lifecycle.

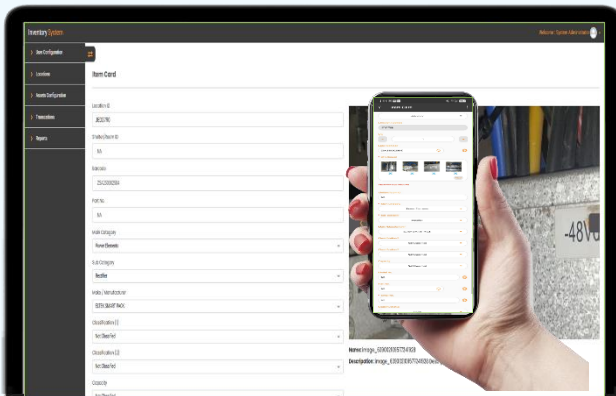
**Passive Discovery (Mobile)** – Uses a mobile application to scan, tag, geo-locate, and validate passive assets in the field. Improves physical asset accuracy, bridges field-to-system gaps, and ensures real-time synchronization with enterprise records.

**Analytics & Reporting** – Delivers real-time operational and executive dashboards through Splunk integration. Enables data-driven decisions, proactive risk detection, and transparent performance monitoring across asset and financial domains.

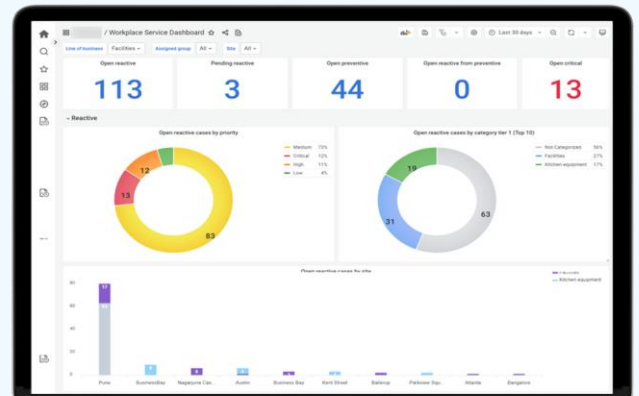


**FOR MORE INFORMATION:** Contact us on:

[Sales@cybermak.net](mailto:Sales@cybermak.net)



Mobile application enabling efficient passive asset discovery and on-site verification



Advanced reporting and analytics powered by Splunk with open integration to third-party reporting platforms

## About CyberMAK

CyberMAK is a leading digital transformation and asset governance partner with over 27 years of multi-industry experience. Established in 1997, CyberMAK operates from headquarters in Kuwait and Austin, Texas, with regional presence across KSA, Bahrain, Egypt, India, and the United States. The company has delivered more than 3,000 customer engagements across 16+ countries, supporting Tier-1 telecom operators and large enterprises with end-to-end consulting, implementation, customization, and managed services. CyberMAK combines deep domain expertise in asset lifecycle governance, ITSM, discovery, automation and analytics..

**Locally Rooted, Globally Delivered**